



Water Management Technologies, Inc. • PO Box 66125 • Baton Rouge, LA 70896 USA
 Toll Free: 877.755.0026 • Phone: 225.755.0026 • Fax: 225.755.0995
 Web Page: W-M-T.com • Email: info@w-m-t.com

Standard features

- Low weight cast aluminum construction.
- Quiet operation with integral inlet and outlet muffling.
- Recognized TEFC motor.
- High efficiency / low noise impeller design.
- No lubrication / maintenance required.
- Allowed ambient: -10 °F to +105 °F.
- Mountable in any plane.

Max. continuous operating Pressure
Vacuum

7.2 psig / 201.0 In. WG
11.1 In. Hg / 150.9 In. WG

Options

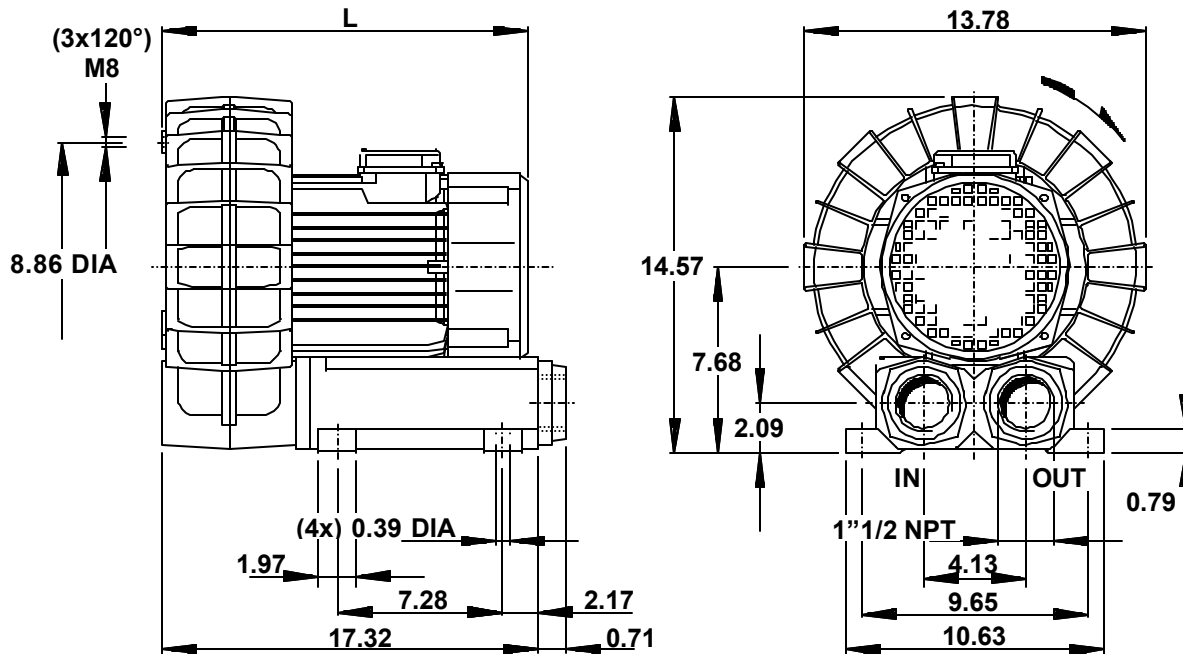
- Remote drive models (belt or coupling).
- Special voltages.
- Surface treatment or plating.
- Gas tight sealing.
- Special designs available.

Accessories

- Inlet and/or inline filters.
- Additional inlet/outlet silencers.
- Safety valves.
- Flow converting devices.
- Optional connectors.



Dimensions in inches



Motor power	Hp 60 Hz	1 1/2	2	3	4
	Hp 50 Hz	1 1/4	1 2/3	2 1/2	3 1/3
L	In.	14.96	16.54	16.54	18.31
Weight	Lbs.	58.30	64.90	71.50	80.30

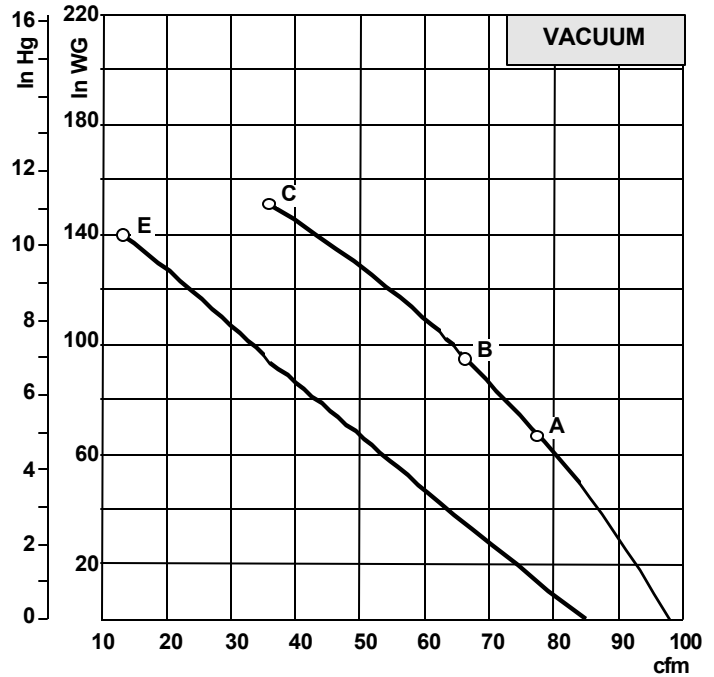
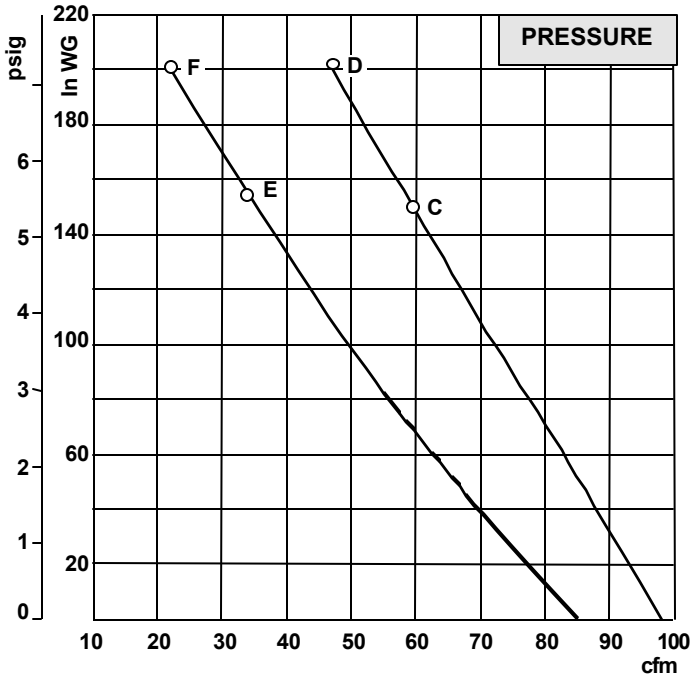


REGENERATIVE BLOWERS - S40D

50 or 60 Hz • Single or Three Phase



Water Management Technologies, Inc. • PO Box 66125 • Baton Rouge, LA 70896 USA
 Toll Free: 877.755.0026 • Phone: 225.755.0026 • Fax: 225.755.0995
 Web Page: W-M-T.com • Email: info@w-m-t.com



Notes:

- Curves indicate performance rated for continuous operation.
- Performance data based on ambient / inlet air temperature of 68 °F and barometric pressure of 29,92 In. Hg
- Performance values may vary by ±10%
- Sound level measured at 1 m distance with inlet and outlet piped.
- Specifications are subject to change without notice.

S40D

60 Hz – 3500 rpm								
Reference		A		B		C		D
Maximum airflow	cfm	98		98		98		98
Maximum continuous pressure	In. WG	-		-		151		201
Maximum continuous vacuum	In. Hg	5.0		7.1		11.1		-
Maximum sound level	dB(A)	75		75		75		75
Motor horsepower	Hp	1 1/2		2		3		4
Standard voltage	Volt	115 or 208-230	208-230/460	115 or 208-230	208-230/460	115 or 208-230	208-230/460	208-230/460
Phase		1	3	1	3	1	3	3
Rated F.L. current	Amps	19,8 or 11,0-9,9	5,1-4,6/2,3	26,4 or 14,6-13,2	6,9-6,2/3,1	36,0 or 19,8-18,0	8,9-8,0/4,0	12,2-11,0/5,5
Rated locked rotor current	Amps	99 or 55-50	31-28/14	132 or 73-66	42-38/19	54 or 48-24	54-48/24	73-66/33
Insulation	Class	F		F		F		F
50 Hz – 2900 rpm								
Reference		E			F			
Maximum airflow	cfm	85			85			
Maximum continuous pressure	In. WG	156			201			
Maximum continuous vacuum	In. Hg	10.3			-			
Maximum sound level	dB(A)	72			72			
Motor horsepower	Hp	2 1/2			3 1/3			
Standard voltage	Volt	230		200/400		200/400		
Phase		1		3		1		
Rated F.L. current	Amps	18,0		8,9/4,0		12,2/5,5		
Rated locked rotor current	Amps	24		54/24		73/33		
Insulation	Class	F		F		F		